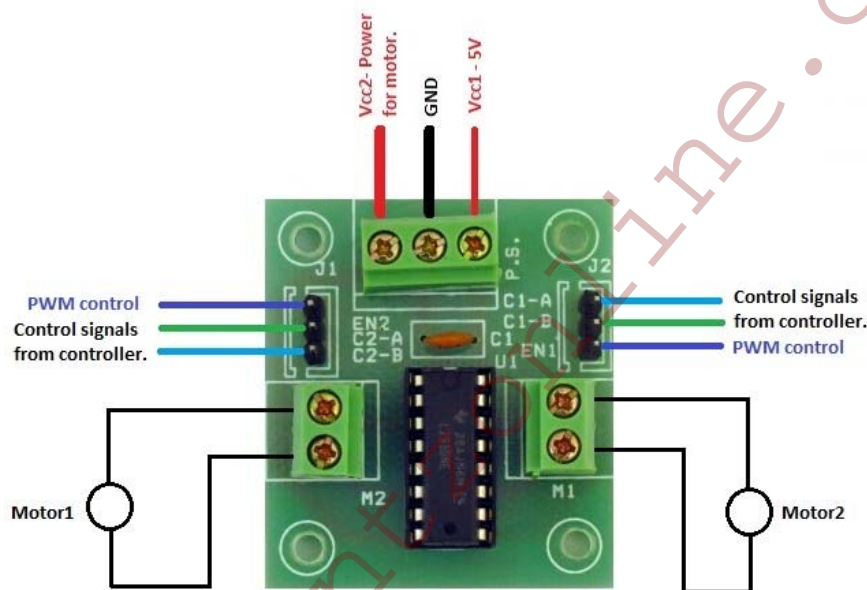


## L293D MOTOR DRIVER BOARD



- A and B are control signals from controller used to control the motor.
- If '10' is given to inputs A and B motor rotates in one direction and if '01' is given motor rotates in opposite direction.
- EN1 and EN2 are enable pins. Connect 5V to EN1 and EN2 for normal operation. ie motor rotates at rated speed.(if 100rpm motor is used, it rotates at 100rpm)
- If speed control is needed, then give PWM signals to EN1 and EN2 from controller.
- Vcc2 is the power supply for the motor. If 12V dc geared motor is used, then connect 12V to Vcc2.
- Make sure to make GND common for the overall circuit.